

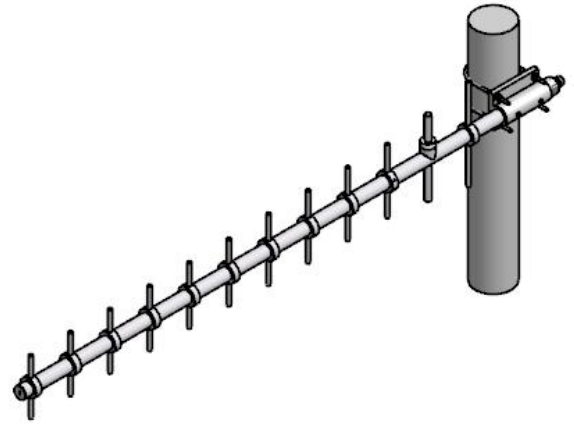
GSM YAGI Antenna

870~960 MHz / 12 dBi



YG-12E-GSM

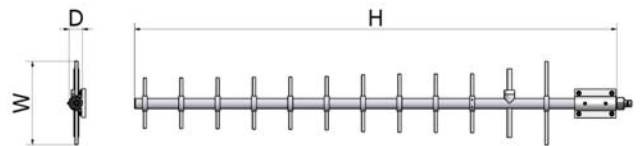
i. Electrical Specification

Frequency Range	870~960 MHz	
Polarization	Vertical	
Band Width	90 MHz	
Gain	≥ 12 dBi	
Beam width	Horizontal	≥ Nominal 35°
	Vertical	≥ Nominal 35°
F-B ratio	≥13	
VSWR	1 : 1.5	
Impedance	50 Ω	
Maximum input power	100 W	

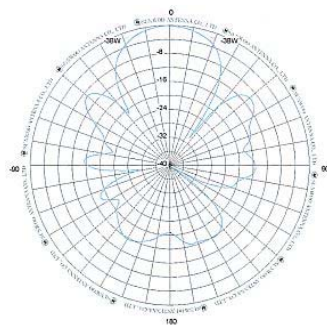


ii. Mechanical Specification

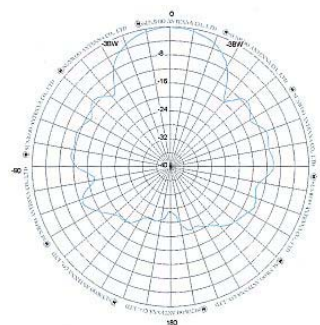
Radom Dimension (H x W x D)	1230 x 180 x 50 mm	
Weight (Include bracket)	≤ 2 kg	
Connector Type	N-Female	
Withstand Wind Pressure	60 m/sec	
Radome Material	AL	
Radome Color		
	Cool Gray 1C	Cool Gray 4C
Mechanical Down Tilt	-	
	-	
Temperature	-40 °C ~ 70 °C	
Packing Size (H x W x D) 10SET	-	
Packing Weight 10SET	-	



iii. Radiation Pattern



Horizontal Pattern



Vertical Pattern